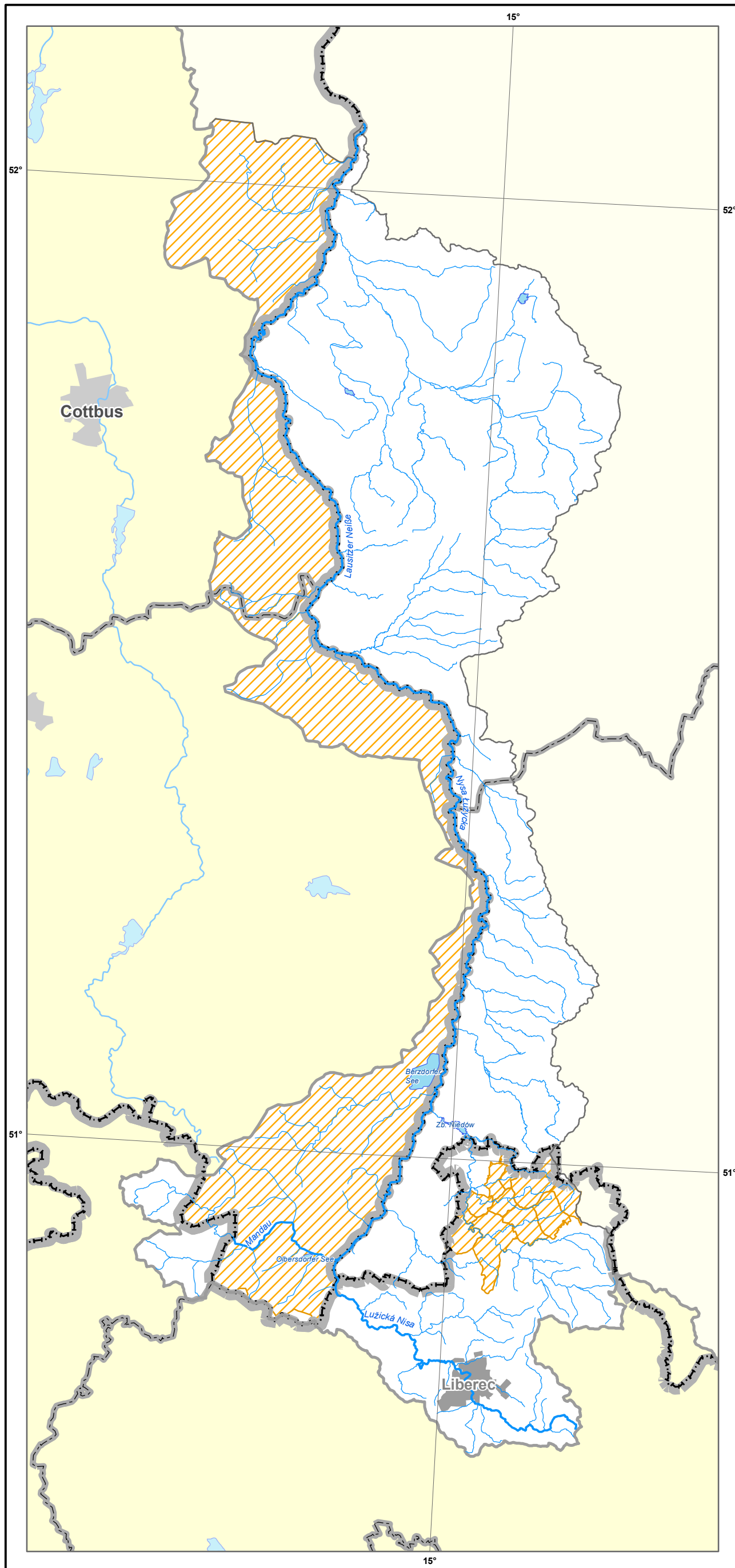


Nutrient-Sensitive Areas



Legend:

- Nutrient-Sensitive Areas (Directive 91/676EEC and 91/271EEC)
- Surface Water Bodies**
 - Rivers with Catchm. $\geq 10 \text{ km}^2$
 - Lakes $\geq 0.5 \text{ km}^2$
- Boundaries**
 - Member States
 - Internal
 - Odra River Basin District
 - Working Areas
- Cities > 50,000 inh.

Data Sources:

- Data of Competent Authorities of the Reporting States
- ATKIS ®, DLM 1000, Copyright © Bundesamt für Kartografie und Geodäsie, 2003
- The Working Group of the Federal States on water issues (LAWA)
- ZABAGED ® Zeměměřický úřad
- © Główny Urząd Geodezji i Kartografii
- Mapa Podziału Hydrograficznego Polski - Ministerstwo Środowiska

